



Research & Development Projects 2022 - 2023

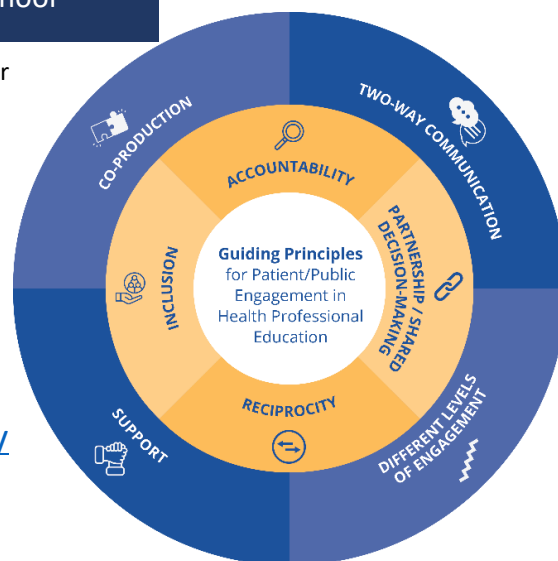
Bringing patients and society into the social accountability of a medical school

With patients and the public, we co-created guiding principles, models and processes for their engagement in the mission, goals, curriculum and delivery of medical education. This included review of 30 practical guides to engagement, environmental scans involving key informants from various institutions, and patient/public consultations.

A synthesis report includes 8 Guiding Principles for engaging patients and the public in health professional education and 10 recommendations to help medical and other health professional schools fulfill their mandate for social accountability by involving patients/the public.

Project reports, guiding principles and video are on the website. Two manuscripts are under review. <https://meetingofexperts.org/programs-activities/social-accountability/>

Funded by: Royal College of Physicians & Surgeons of Canada/Associated Medical Services CanMEDS Research Grant



Combating Ableism in Health Care

Summer students Yukta Bhandari and Martina Francisco did an environmental scan of UBC courses with content about disability.

They surveyed 76 instructors from Vancouver and Okanagan campuses about involvement of people with lived experience in teaching and learning about disability. 24 instructors are interested in having people with disabilities contribute to courses in health sciences, sociology, engineering and social work.

Follow-up interviews with 9 instructors revealed that people with disabilities currently have some involvement in creating learning materials, sharing their experiences with students and advising on course development. There is also a lot of enthusiasm for expanding engagement.

Funded by: Vancouver Foundation Cedar Lodge Endowment.

"It's about having conversations, allowing students to ask questions ... that's what students find most helpful."

Dr. Lillian Hung, head of the Innovation in Dementia and Aging (IDEA) lab in the School of Nursing.

Next Steps

We will bring together faculty, students, and individuals living with head and other physical injuries and disabilities to co-create learning resources that help students learn how to combat ableism and provide safe and accessible care.

Virtual Care & Planetary Health Curriculum Projects

PCPE is collaborating with Dr Adrian Yee, Director of Curriculum for the UBC MD Undergraduate Program, and his team of faculty, students and patient partners on two new curriculum projects: virtual clinical care, and planetary health (climate change). PCPE is helping to recruit patient and caregiver partners for the project, facilitate their input and provide overall advice on patient engagement.

In summer 2022 we organized several focus groups on both topics to learn about patient/caregiver experiences. These experiences are being incorporated in learning objectives for medical students, and educational materials such as podcasts and videos. The projects are supported by grants from the **UBC Teaching and Learning Enhancement Fund** (virtual clinical education) and a **UBC Climate and Wellbeing Education** grant (planetary health).

Our Collaboration with Bahiana School of Medicine and Public Health explores ways to facilitate learning between mentors and students from very different socioeconomic and cultural backgrounds.

This case study may inform efforts to improve equity, diversity and inclusion of underrepresented groups in health professional education.

5 Health Mentors - outpatient clinic at BAHIANA and members of HTLVida.

16 Students - Medicine, Nursing, Psychology and Physiotherapy.

4 Supervisor professors



Distinguished & Visiting Scholars

Canfield Distinguished Scholar Dr. Maria Hubinette was appointed for a 3-year term, effective March 31, 2023, as the inaugural **Canfield Distinguished Scholar in Patient Partnerships** thanks to a generous donation from Carolyn Canfield, a citizen-patient advocate.

As the inaugural Canfield Scholar, Dr. Hubinette will support research, as well as teaching and outreach initiatives in patient partnerships in health professional education. Work is underway on an environmental scan of patient involvement in the MD Undergraduate Program. We plan to collaborate with the *Centre of Excellence on Partnership with Patients and the Public* at the University of Montreal to extend this environmental scan to all Canadian medical schools.

Visiting Scholar Sept 26 – Oct 7, 2022

Dr. Deb Virtue, Deputy Head of Department, Physiotherapy, University of Melbourne, spent 2-weeks with us to learn about the Health Mentors program. She plans to develop similar programming at the University of Melbourne, Australia.



Students at UBC are very fortunate to have the opportunity to participate in these world-renowned programs supported by incredible health mentors.

Dr. Deb Virtue

Future Directions

Public and Patient Involvement in Interprofessional Education (PULPIT)



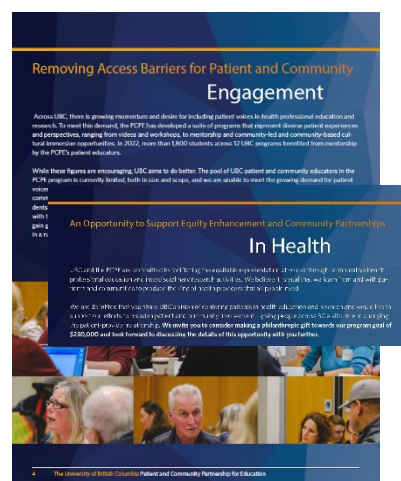
PCPE is part of a 3-year international collaboration to promote patient and public involvement (PPI) in interprofessional education (IPE) of undergraduate healthcare students. Outcomes will include international consensus recommendations on promoting PPI and IPE, a MOOC, educational materials (videos, podcasts, leaflets, quizzes), the validation of the PULPIT Program, with a white paper for its implementation and sustainability in other universities.

Partners: Nursing School of Lisbon, *Portugal*; School of Medicine, Minho University, *Portugal*; EUPATI (non-profit patient organization) *Portugal*; Maastricht University, *Netherlands*; Patient-as-a-Person Foundation, *Netherlands*; Faculty of Health Sciences, University of Maribor, *Slovenia*; PXL University of Applied Sciences and Arts, *Belgium*; EUPATI *Belgium*; KU Leuven University, Clinical Pharmacology and Pharmacotherapy department, *Belgium*; UBC Patient & Community Partnership for Education, *Canada*

Fundraising for a Community Engagement Coordinator

PCPE with the Faculty of Medicine Development office is working to raise \$250K for appointment and support of a *community engagement coordinator* who will ...

- Strengthen our existing and ever-increasing community connections;
- Build capacity among current health mentors to take on additional roles;
- Build relationships with specific under-represented populations and with more individuals and groups outside the lower mainland;
- Explore formal partnership agreements with community organizations;
- Facilitate the creation a community-based organization to partner with the university (renewal of Patients In Education (PIE).



GOAL: \$250,000

