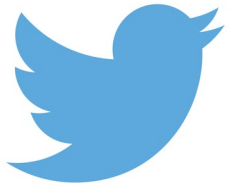


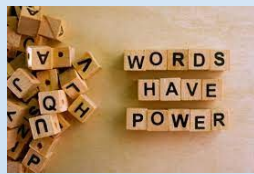
Patients are Whole

**Jo-Anne Woods (Health Mentor)
Kishore Hari (Public Health)
Nicole Willows (Occupational Therapy)
Mackailyn Arnason (Dentistry)
Navita Dhillon (Medicine)
Group 28**



TWEET

“Good healthcare team. Listening and taking patient in whole, not looking at just the condition. Words are powerful. Living your best life.”

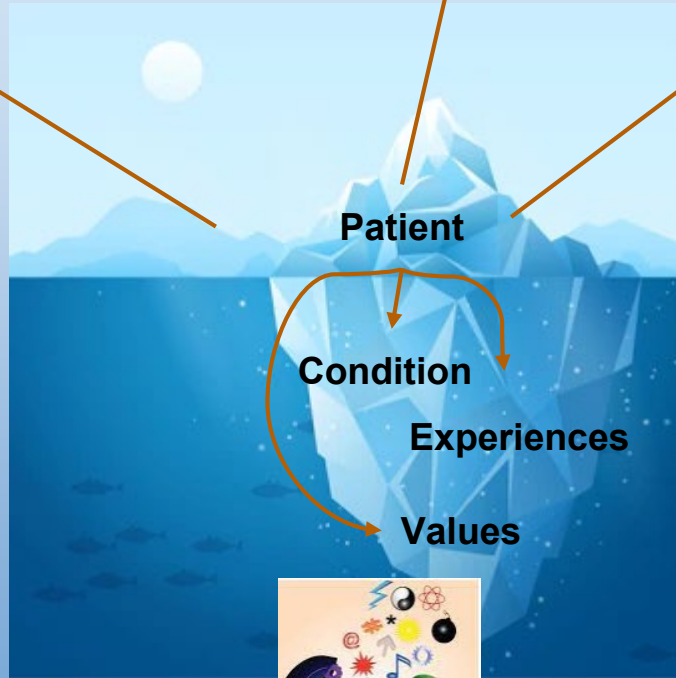


**Power of Word
Choice**

Healthcare Team



Living their Best Life

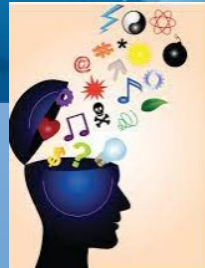


Patient

Condition

Experiences

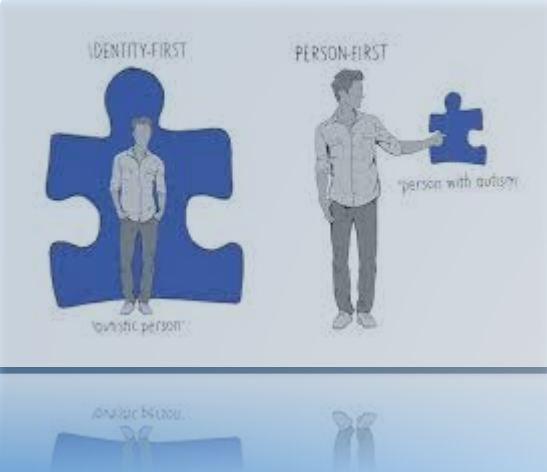
Values



Healthcare Team

- A source of healthcare information
- Help shape patient outcomes and perspectives





Power of Word Choice

Use people-first language

Do not let a condition define an individual

Patient/Client

- Condition
- Experiences
- Values



Living their Best Life

- Feeling understood
- Comfortable and authentic
- Having autonomy



Any Questions?

