

WE NEED TO BE AWARE OF PATIENT-CENTRED CARE.

IT'S THE WAY OF THE FUTURE.

Group #44:

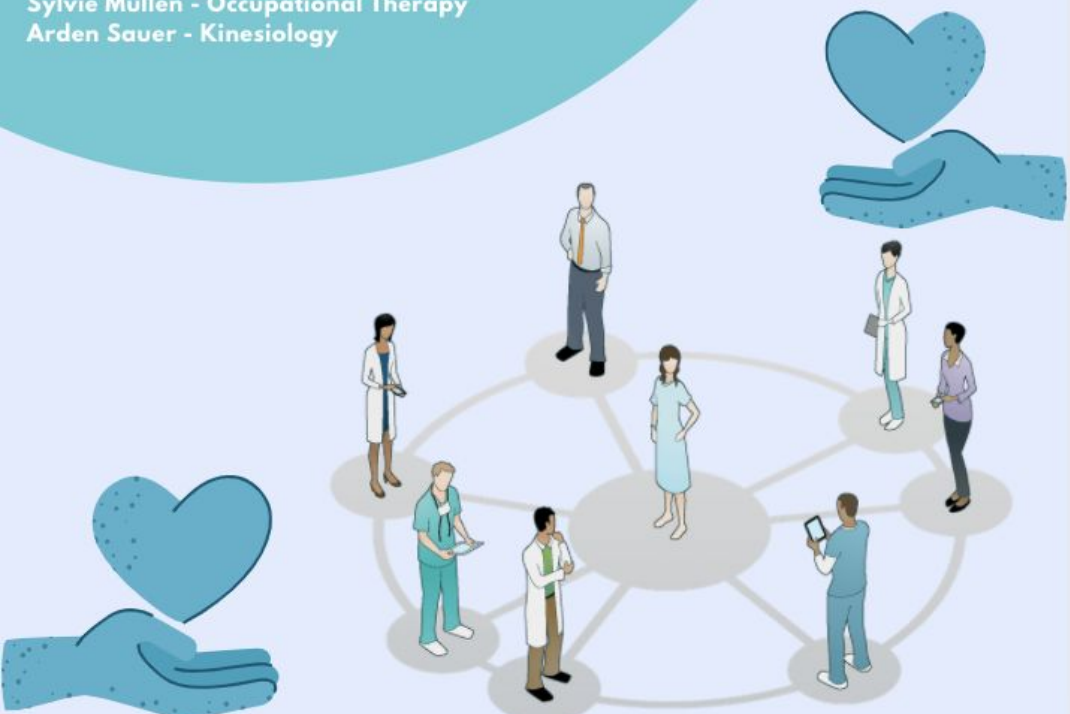
Pam Palmer - Mentor

Mary Wood - Medicine

Isabel Steinberg - Speech-Language Pathology

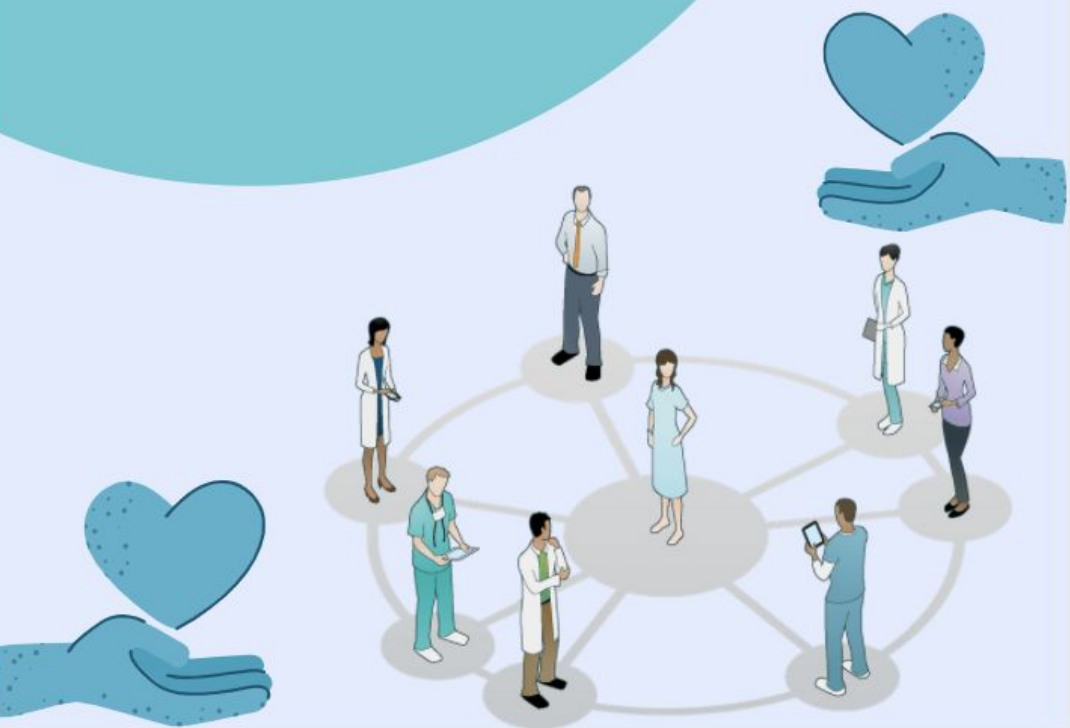
Sylvie Mullen - Occupational Therapy

Arden Saver - Kinesiology



COMMUNICATION:

**PERSONALIZED
COMMUNICATION OPTIONS,
INCLUDING WRITTEN
COMMUNICATION AND THE
USE OF AUGMENTED AND
ALTERNATIVE
COMMUNICATION (AAC)
DEVICES**



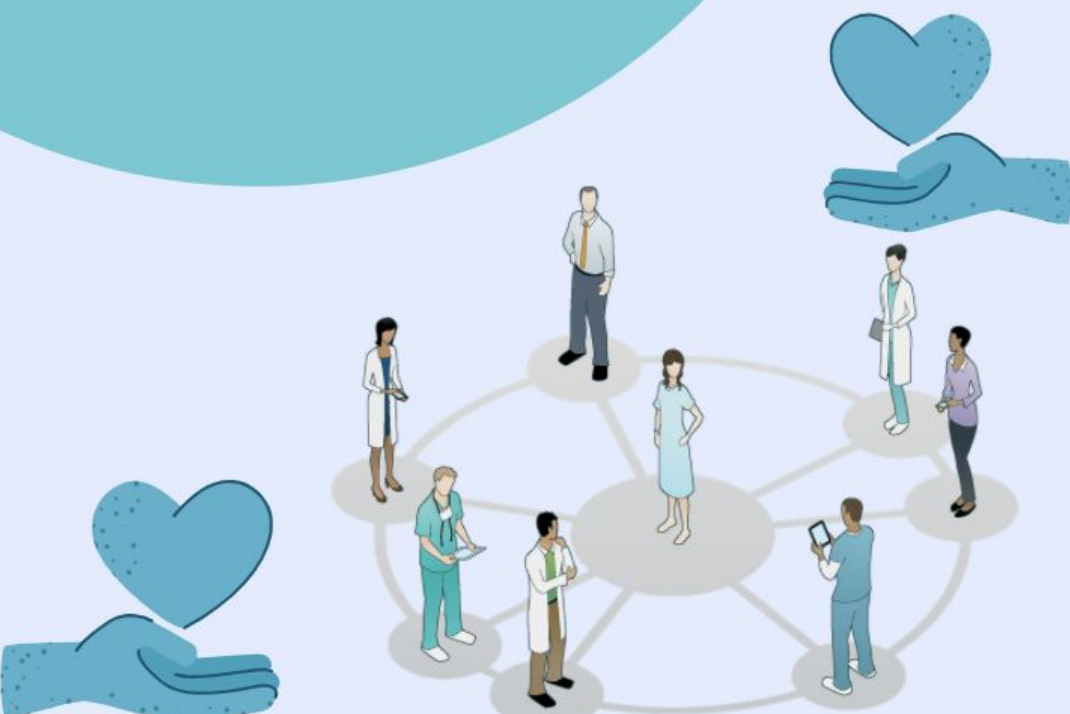
COLLABORATION:

HEALTH CARE PROVIDERS
SHOULD BE WORKING WITH
PATIENTS FOR PATIENTS



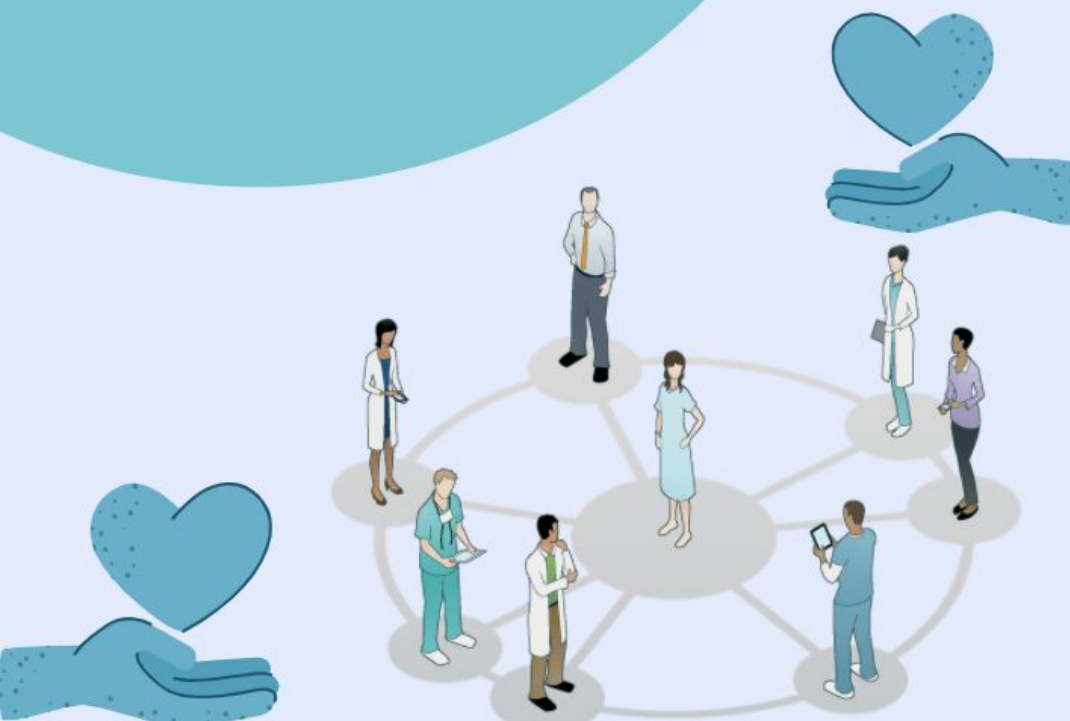
INDIVIDUALIZED CARE:

WHAT WORKS FOR ONE
DOES NOT WORK FOR ALL



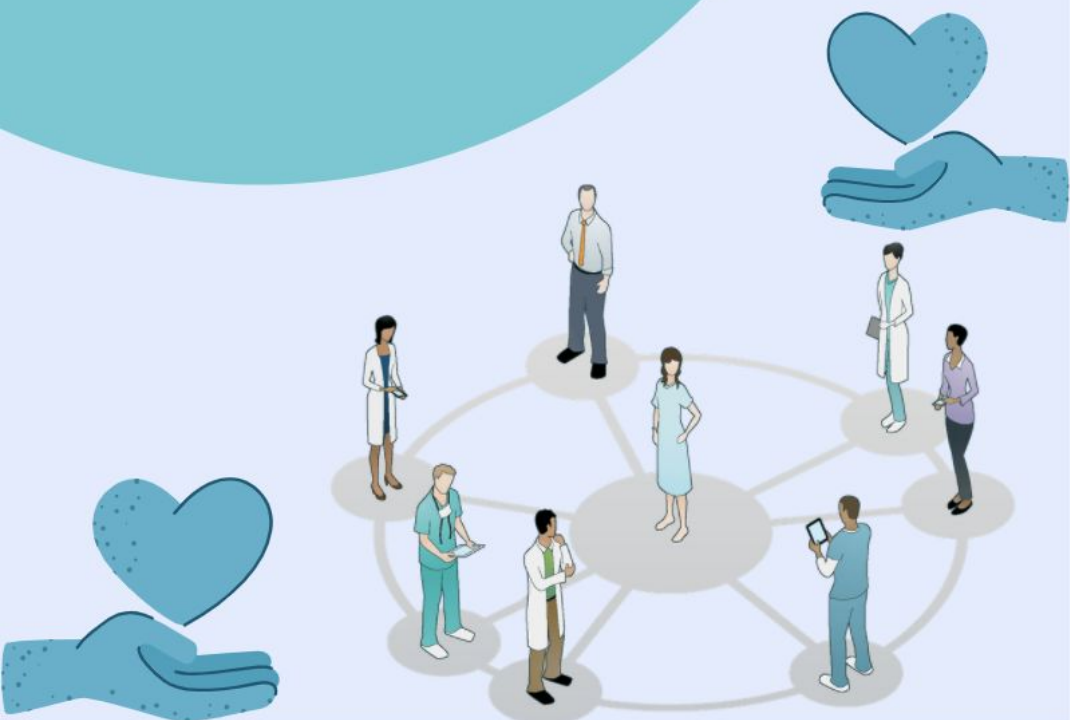
COMPASSION:

RECOGNIZING OUR SHARED HUMANITY



HOLISTIC:

YOU MUST INCORPORATE
EVERY PIECE OF A PUZZLE IN
ORDER TO SEE THE WHOLE
PICTURE



WHAT DOES PATIENT- CENTERED CARE MEAN TO YOU?

