

Group 22: The Diabetic Odyssey

Rowan Burdge - Mentor

Catherine Binda - Medicine

Sam Patko - Nursing

Emma Haggins - Speech Language Pathology

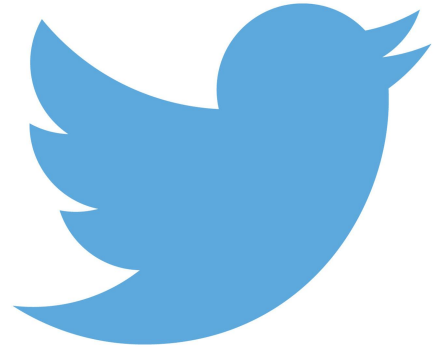
Ann-Marie Peturson - Genetic Counselling



Group 22's Tweet

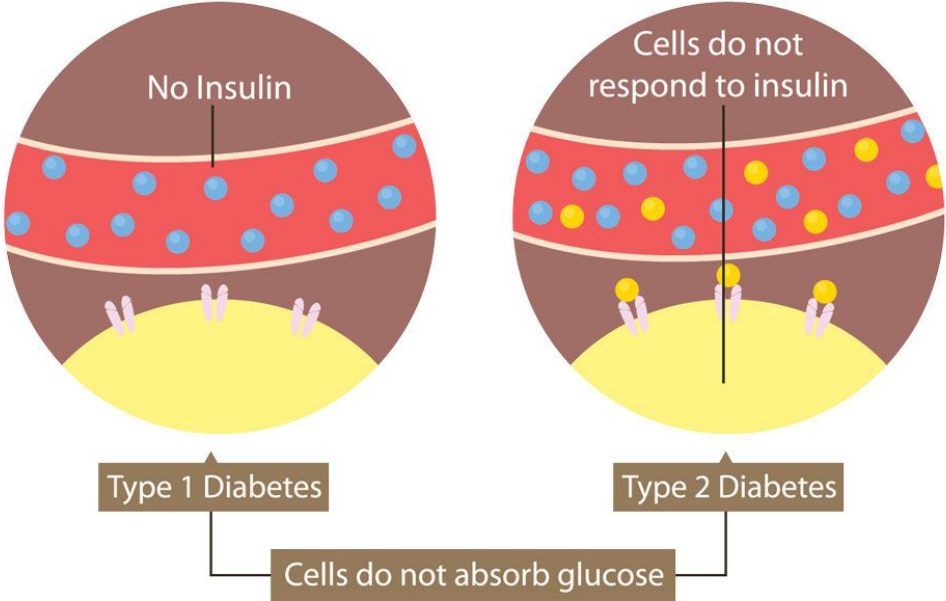
Patient experience must inform access & advocacy, not stigma & assumptions about the visibility of disability.

[#PharmacareNow](#) [#Insulin4All](#)



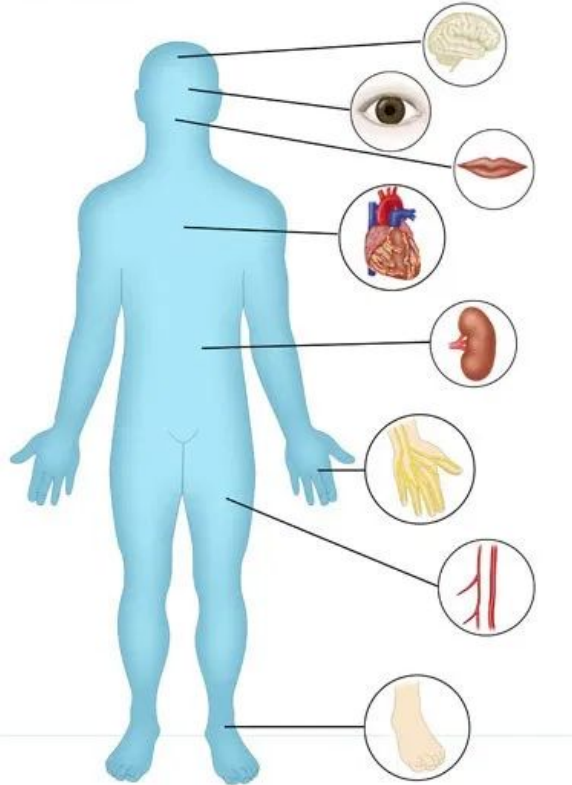
Diabetes

Types of Diabetes



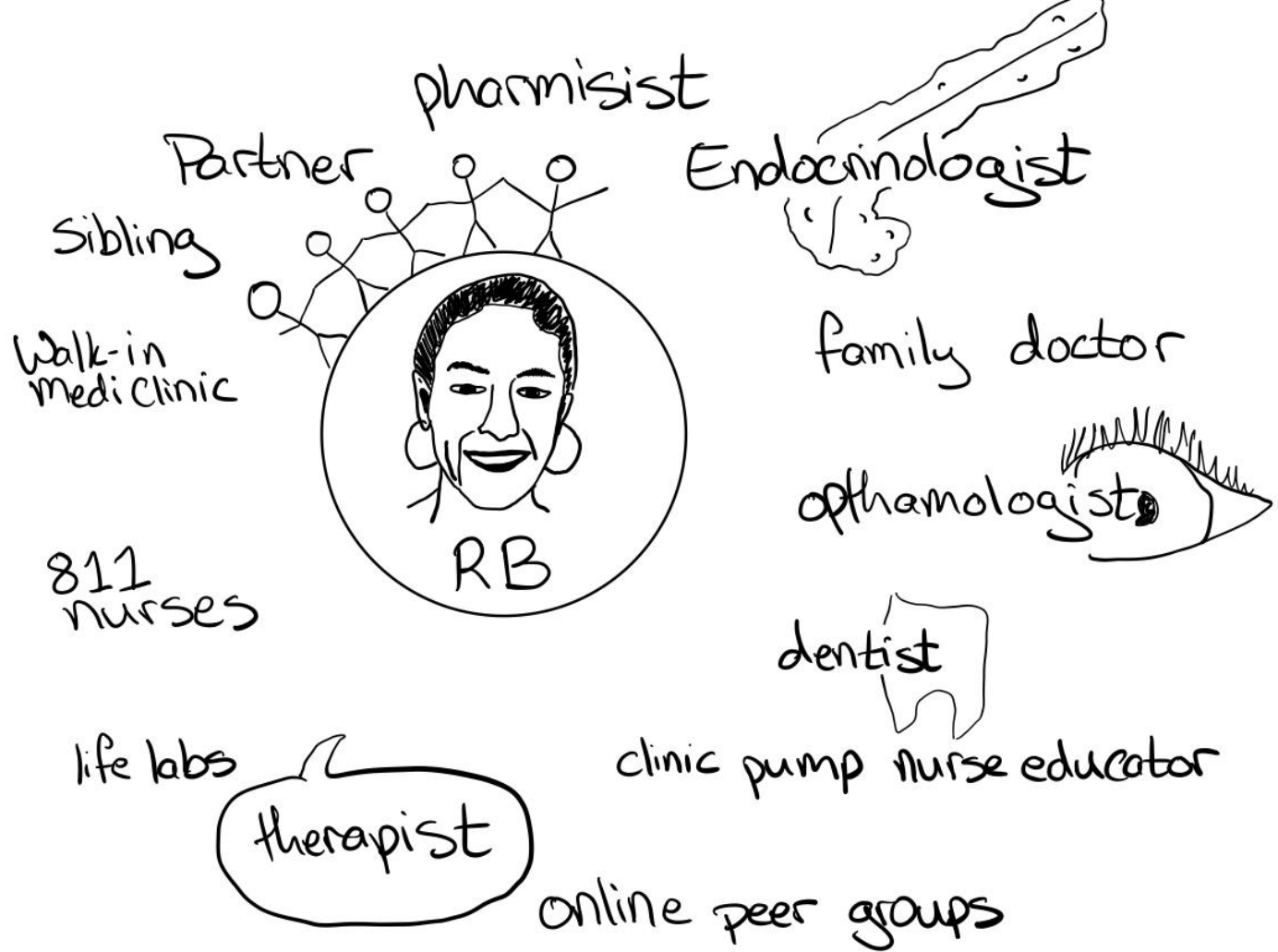
<https://www.pedors.com/blog/diabetes-a-simple-guide/>

Diabetes Can Affect Various Parts of Your Body



<https://www.healthline.com/diabetesmine/complications-diabetes-real-world-information-diabetesmine>

The Healthcare Team



Patient Education

- Patient education must be an ongoing dialogue
- The order in which information is provided matters and may change in different contexts
- Added stress on the patient to continue educating themselves
- Education should encompass the whole person



#PharmacareNow

- The cost of insulin/ insulin pumps and all the necessary equipment is astronomical
- There are significant differences in coverage depending on location

Group Action Item:

Please sign and share

<https://nursesunions.ca/campaigns/pharmacare/>



Comments or Questions?

