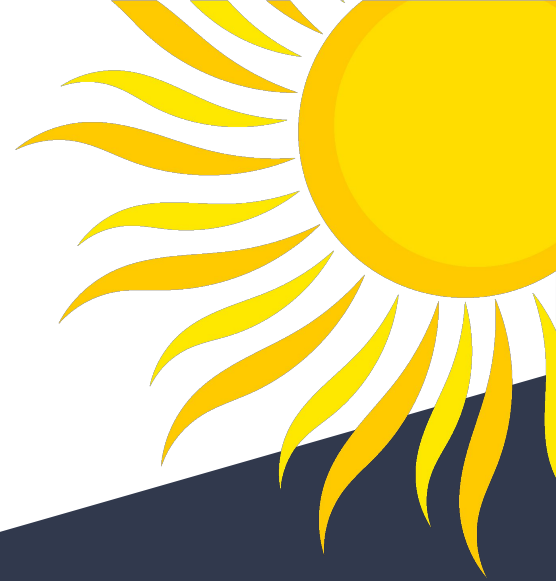


Patient (client)-centered care
is
Person-centered care



Patient-centered care is person-centered care that acknowledges humanity and the patient as more than just their disease/disability #HMP15

SHOWING UP FOR PATIENTS/ CLIENTS

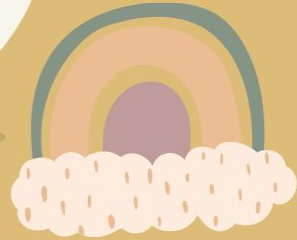
Coming
prepared



Listening



Holding
space



Effective Communication



Identify the client



Avoid jargon



Use all the information
available to you



PATIENTS ARE MORE THAN THEIR ILLNESS

Commit to taking care of the patient as a
human being

Mentally

Spiritually

Physically

Emotionally

Next Steps: breaking or building hope



"There's nothing we can do."



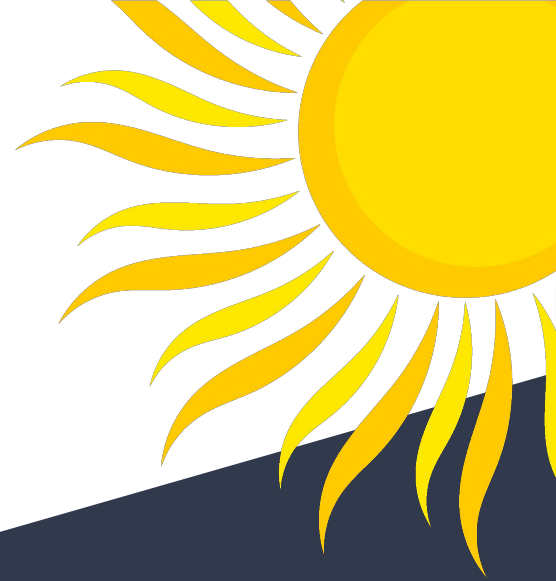
*"Here's what we can do
in the meantime..."*

Future healthcare professionals WANT to

- *hear the experiences and stories because they WANT to do better, they WANT to learn, and they WANT to deliver care in ways that are meaningful and valuable to the whole person, not just the illness or disease*

Sharing our collective stories as patients and caregivers can ..

- *Create compassion and desire of healthcare students to SEE, HEAR, and ACKNOWLEDGE the person, their personal needs or wishes, so they can offer the appropriate care for the whole PERSON with the Disease, not just the disease.*



*P*atient (client)-centered care
is
*P*erson-centered care

Thank You

A dark blue, solid-colored shape that starts from the bottom left corner and extends diagonally upwards to the right, covering the bottom half of the page.